

Copyright

Copyright© 2004-2008 Unisplendour Corporation Limited. This publication is copyrighted with all rights reserved under the copyrights law of People's Republic of China. This publication may not be modified, adapted, transcribed, photocopied or reproduced, in part or in whole, without prior consent of Unisplendour Corporation Limited.

Trademark

Trademark and software names mentioned herein are property of their respective owners.

Disclaimer

The information of the publication is for explaining the usage of the color scanner produced by Unisplendour Corporation Limited. Unisplendour Corporation Limited shall not be liable against the information.

This publication has being reviewed thoroughly, whereas it is possible that misprint or inaccurate description might occur. Your comments and feedback will be highly appreciated and help us maintain the accuracy of this publication.

The information contained in this publication is subject to change without notice.

The product is designed and produced to achieve sustainable environmental improvement. We strive to produce products in compliance with global environmental standards. Please consult your local authorities for proper disposal. The product packaging can be recycled.

Table of Contents

I. HOW TO SET UP YOUR SCANNER1

Safety Precautions.....	1
Box Contents	2
Setting up the Scanner	3
Step 1. Hassle-Free Lock Mechanism.....	3
Step 2. Connecting the Scanner to Your Computer	3
Step 3. Installing the Software.....	4
Step 4. Testing the Scanner	7
Uniscan Scanner Setup After Windows XP Upgrade	8

II. HOW TO OPERATE YOUR SCANNER.....9

Scanner Buttons.....	10
How to Change the Scan Mode.....	10
How to Define The Custom Button	11
Scanning the Films	11
Installing the Transparency Adapter.....	12
Film Holders.....	12
Scanning Negative and Positive Films	12
Important Notes about Scanning Film	16
Scanning Image(s) from Uniscan TWAIN.....	17

III HOW TO MAINTAIN YOUR SCANNER 19

The Scanner Utility Program	19
Scanner Connection.....	19
Lamp Control	20

Aligning the Scanner.....	21
Removing the Document Cover.....	21
Maintenance	22

APPENDIX: SPECIFICATIONS..... 23

I. How to Set up Your Scanner

Safety Precautions

Before using this device, please read the following important information to eliminate or reduce any possibility of causing damage and personal injury.

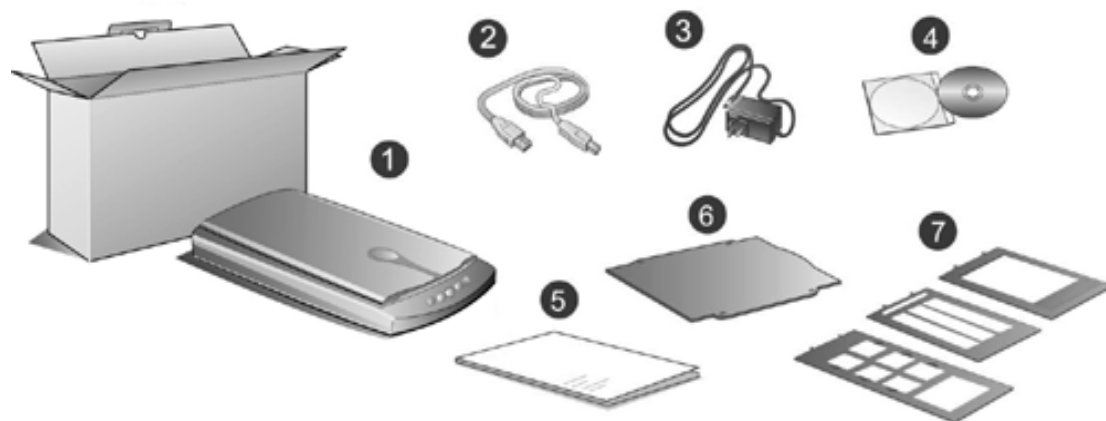
1. Moisture condensation may occur inside this device and cause malfunction at these conditions:

- when this device is moved directly from a cold to a warm location;
- after a cold room is heated;
- when this device is placed in a damp room.

To avoid the moisture condensation, you are recommended to follow the procedure:

- i. Seal this device in a plastic bag for it to adapt to room conditions.
 - ii. Wait for 1-2 hours before removing this device from the bag.
2. Do use the USB cable provided with the scanner. Use of other cable may lead to malfunction.
 3. Unplug this device if you don't need to use for a certain period of time, such as, during night or long weekend, to avoid any risks of causing fire.
 4. Do not attempt to disassemble the scanner. There is danger of an electrical shock and opening your scanner will void your warranty.
 5. Be sure not to bump or knock the scanner glass as it is fragile and could break.
 6. Keep the space around the AC adapter clear in case you need to quickly unplug the AC adapter during emergencies.

Box Contents¹



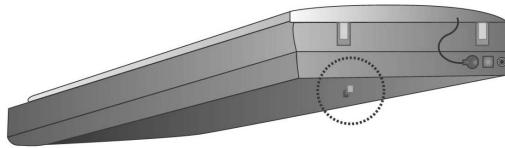
1. Uniscan Scanner
2. USB Cable
3. Power Adapter
4. Setup / Application CD-ROM
5. User's Guide
6. Reflective Document Mat
7. Film Holders

¹ Save the box and packing materials in case you need to transport this scanner in the future.

Setting up the Scanner

Step 1. Hassle-Free Lock Mechanism

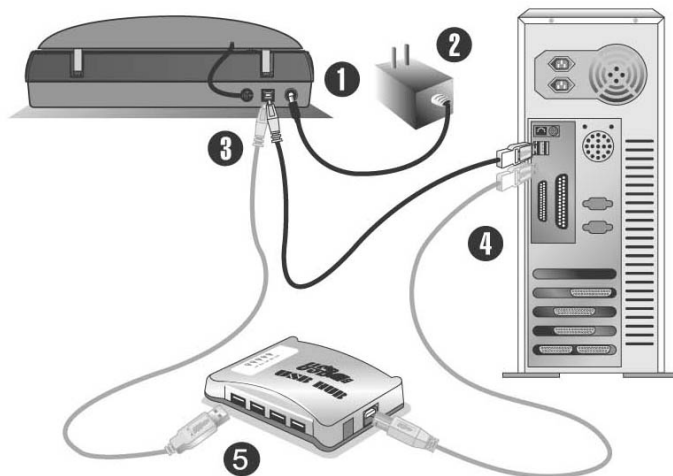
This scanner has an automatic locking mechanism to hold the scanning head in place during transportation. When the locking switch (located on the scanner's underside) is pressed, it automatically unlocks the scanning head; when not pressed, it automatically locks up the scanning head again.



Note

- Always place your scanner on a flat and smooth surface before proceeding the scanner setup or any scanning task.
- When you need to move the scanner, do keep the locking switch NOT PRESSED to ensure accurate and problem-free use of your scanner.

Step 2. Connecting the Scanner to Your Computer



1. Plug the power adapter² into the scanner's power receptor.
2. Plug the other end of the power adapter into a standard AC power outlet.
3. Plug the square end of the included USB cable to the USB port at the rear of the scanner.
4. Plug the rectangular end of the USB cable to the USB port on the back of your computer.

Note: If there is another USB device connected to the computer, connect the scanner to an available USB port.

5. If you plan to connect your scanner to a USB hub³, make sure that the hub is connected to the USB port in your computer. Next, connect the scanner to the USB hub.

Note: If you do not have a USB port available, you might need to buy a USB port. (You are recommended to keep the device close to the AC power outlet and within easy reach.)

Step 3. Installing the Software

1. If the USB components on your computer are functioning correctly, they will automatically detect the scanner causing the "Add New Hardware Wizard" or "Found New Hardware Wizard" to be launched.
2. For Windows 98 & 2000:
 - a. Click on the **Next** button when the "Add New Hardware Wizard" window is displayed.
 - b. Select **SEARCH FOR THE BEST DRIVER FOR YOUR DEVICE [RECOMMENDED]** and click on the **Next** button.
 - c. The next window will ask you where to search to find the drive. Select **CD-ROM drive**, and deselect **Floppy disk drives** if it is checked.
 - d. Insert the Setup/Application CD-ROM, included with your scanner, into your CD-ROM drive and then click on the **Next** button.
 - e. Click on the **Next** button when the next window displays. Afterwards, for Windows 98 users, please skip to Step 6.
3. For Windows Me & XP:
 - a. Insert the Setup/Application CD-ROM, included with your scanner, into your

² Keep the space around the AC adapter clear in case you need to quickly unplug the AC adapter during emergencies.

³ The USB hub is not included with the scanner.

CD-ROM drive.

- b. Select **Install The Software Automatically [Recommended]** and click on the **Next** button.
- c. Click on the **Next** button when the next window displays. Afterwards, for Windows Me users, please skip to Step 6.
4. For Windows Vista:
 - a. Select "Locate and install driver software (recommended)" when the "Found New Hardware" window is displayed.
 - b. Click on the [Continue] button when the "User Account Control" dialog pops up.
 - c. Insert the Setup/Application CD-ROM, included with your scanner, into your CD-ROM drive when the system prompts you "Insert the disc that came with your USB Scanner" , and click on the [Next] button.
 - d. During the process of the installation, a message "Windows can't verify the publisher of this driver software" might be prompted. Please ignore it, and click on [Install this driver software anyway] to continue the installation without any misgiving at your scanner functioning.
5. During the process of the installation, a message "Windows Logo authorization required" or "Digital Signature required" might be prompted. Please ignore it, and click on **Continue Anyway** to continue the installation without any misgiving at your scanner functioning.
6. When the system completes the installation, click on the **Finish** button.
7. Follow the on-screen instructions to install all software that your new USB scanner requires.
8. After the software is installed, close all open applications and click on the **Finish** button to restart your computer.



Note

- If the scanner installation is not started and displayed automatically on the screen, click **START**, select **RUN** and type in "**D:\install**" (where D: is the drive letter assigned to the CD-ROM drive of your computer.)
- To make scanner work properly, you are recommended to install bundled applications (such as NewSoft Presto! ImageFolio, NewSoft Presto! PageManager, ABBYY FineReader) in your system.
- This scanner is designed and manufactured strictly in compliance with USB 2.0 High Speed and Full Speed specifications. Should you encounter scanning problems with this scanner on Windows 98/Me whereas you have also recently upgraded the computer hardware to include USB 2.0 High Speed support, it is very probably resulted from the compatibility between the operating system and the USB 2.0 chipset on mother boards or interface cards due to Microsoft's lack of USB 2.0 support in Windows 98/Me. To rectify the problem, you are recommended to buy an additional compatible card or upgrade your operating system to Windows XP/2000.
- Please do not use multiple USB scanners in Windows XP simultaneously! For more information, please refer to the following URL...

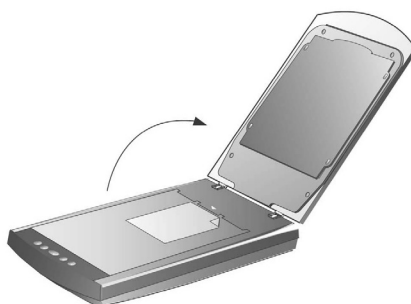
<http://support.microsoft.com/default.aspx?scid=kb;en-us;324756>

Step 4. Testing the Scanner

The following describes how you can check if the scanner is properly functioning with your computer by performing your first scan.

To properly test your scanner, please perform the following steps:

1. Open the scanner's document cover and place a picture onto the scanner glass headfirst and face-down.



2. Gently close the document cover.
3. Click on the Windows **Start** button to launch NewSoft Presto! ImageFolio.
4. If you have only one scanner connected with your computer, please skip to Step 5. If you have more than one scanner or other imaging device installed on your computer, click **Select TWAIN Source** from the **File** menu of Presto! ImageFolio and then choose this scanner as the default scanning source.
5. Within Presto! ImageFolio, click on **File | Acquire | Acquire**.
6. The Uniscan TWAIN interface will open.
7. Click on the **Scan** button.
8. If an image appears on your screen, your scanner is working properly.



Note

If the test failed in any way, please refer to the [Scanner Utility](#) section of this manual and follow the instructions therein.

Uniscan Scanner Setup After Windows XP Upgrade

If you plan to upgrade your operating system from Windows 98 or Me to Windows XP after having installed the scanner software, please follow the instructions below:

1. Unplug the scanner's AC power adapter from the electrical outlet.
2. Unplug the scanner's USB cable from the rear of the computer.
3. From the Windows **Start** menu, click on **Programs | Uniscan XXX (XXX represents your scanner model name)**. In the pop-up menu that opens, choose [**Uninstall Uniscan Scanner**]. Follow the on-screen instructions to remove all the scanner software.
4. After uninstallation completes, close all open applications and click the **Finish** button to restart your computer.
5. Start installing your Windows XP upgrade software by following Microsoft's related procedures.
6. When the Windows XP upgrade is done, re-install the scanner's hardware and software. Refer to the hardware and software setup sections of this manual for details.

II. How to Operate Your Scanner

Your scanner accepts documents as small as 35 mm films and as large as A4-sized documents. However, some software programs have limitations as to the information they can handle. The capacity of the computer's memory and free space on your hard drive can also limit the physical size of the document that you scan.

There are two different ways to operate the scanner:

1. From within an image-editing program that can acquire Uniscan TWAIN window to capture images from your scanner.
2. By using the Express Manager program that is automatically installed as your scanner software.

The Uniscan TWAIN Interface is a bridge between you and your scanner. You can adjust the scanned images in details to a desired condition (Advanced Scan Mode) or just click on a button (Auto Scan Mode) for an effortless scan job.

The Express Manager integrates your scanner with other peripherals to provide a quick and convenient way to perform various scanning functions such as File, Scan, OCR, Copy, E-mail, Fax, and Wallpaper, and this can save your time in opening individual application for each function you will use.

Please refer to their on-line Help for more information about those functions.

Your scanner needs to be driven by some type of software program. Since all documents or images (whether text or pictures) that are acquired from the scanner are treated by your computer as images, most scanning will probably be done from an image-editing program where you can view, edit, save and output the scanned images. An image-editing program has been bundled with your scanner on the included Setup/Application CD-ROM. It will allow you to alter and correct any scanned images by using a variety of filters, tools and effects.

What about scanning text documents and editing them in a word processor? This is the role of Optical Character Recognition (OCR) software. OCR software converts the image files that are created from scanning text documents into text files that can be viewed, edited and saved by word processors. An OCR program has also been bundled on the included Setup/Application CD-ROM, and if you wish to use the scanner in this way you should install the OCR software that is included.



The scanning of certain documents, for example checks, bank notes, I.D. cards, government bonds, or public documents, may be prohibited by law and/or subject to criminal prosecution. We recommend you to be responsible and respectful of the copyrights laws when you are scanning books, magazines, journals and other materials.

Scanner Buttons

Your scanner is equipped with five function buttons designed to make your scanning projects for bounded printing materials more convenient and efficient. There are three modes you can choose from to connect with your buttons:

Auto Mode: The EasyTouch Technology will scan the images automatically with optimal settings and send the scanned image to the post processing software. This mode offers you the most effortless scanning.

EZ Mode: If you have various scanning jobs with the same setting, this mode is recommended to achieve the efficiency. (It doesn't support this mode in Negative Scan and Positive Scan.)

Advanced Mode: If you want to control and tailor each scan closely matching your own needs, this mode with many available choices is recommended.




Note

Some scanner buttons can not function if you have not installed the related driver or application programs. For example, the scanner and printer must be installed correctly in Windows before you can use the Copy button correctly.

How to Change the Scan Mode

You can change the default Auto Mode by following the step-by-step procedure:

1. Right click the Express Manager icon  on the Windows system tray.
2. Choose **Button Configuration** from the pop-up menu. Or, if you have opened the Express Manager interface by right clicking the Express Manager icon and selecting **Express Manager**, just click the **Button Configuration** button on the Express Manager interface.
3. On the left hand side of Button Configuration window, select the button you want to set up.
4. Check **EZ mode** or **Advanced Mode**.
5. Click **OK** or **Apply**.



Note

For further information about using **Express Manager**, please refer to the on-line help by either way:


1. Clicking the **Help** button when you are using the program.

2. Pointing to **Program | (your scanner model name)** from Windows **Start** menu, and selecting **Express Manager Help**.

How to Define The Custom Button

You may turn the Custom button on the scanner panel into a multifunctional assistant by defining it as other function that is included in the Express Manager. Once the Custom button is defined, the selected function will be launched with one press on the button.

The following describes how to define your Custom button by using Button Manager in Express Manager.

1. Right click the Express Manager icon  on the Windows system tray and select **Button Manager** from the pop-up menu.
2. The Button Manager window will pop up.
3. Click the up and down arrows to select the **Custom** button.
4. Choose a desired function from the drop-down list of **Select the button function**.
5. Click **OK** to apply the setting.
6. Once you press the **Custom** button on the scanner, the defined function will be launched.



Note

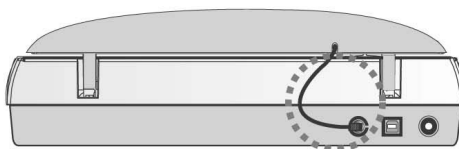
The **Custom** button can function with the default setting “File”, even though you didn’t define the function by using Button Manager beforehand.

Scanning the Films

Your scanner provides an easier and quicker way to scan transparent materials such as positive or negative film. With the special designed film holders supplied with your scanner, you may have a very different experience in proceeding scanning task. Read the following instructions carefully to learn how to scan the films.

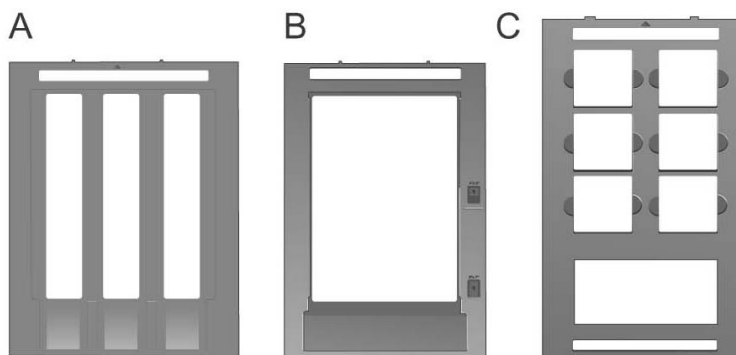
Installing the Transparency Adapter

The transparency adapter is located on the underside of the scanner lid and is a necessary tool for scanning slides, filmstrips, or sheet films. Ensure the transparency adapter cable is plugged in (as illustrated) before you start scanning the films.



Film Holders

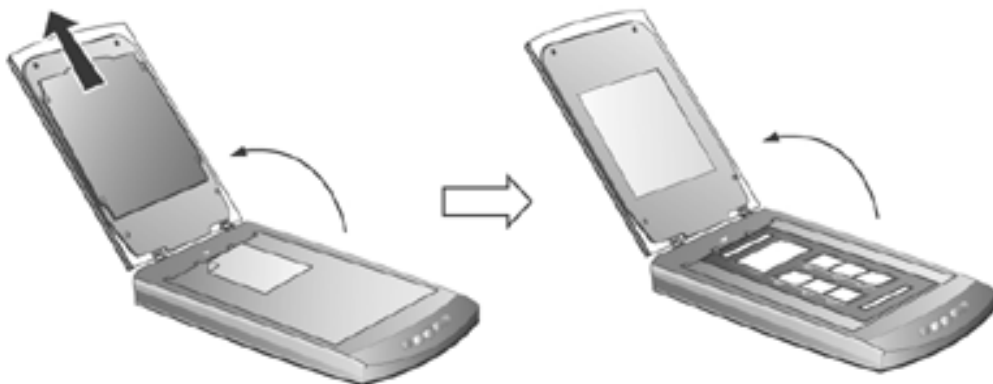
There are three types of film holders. The film holders guarantee the correct position of the films while being scanned.



- A. For scanning 35mm filmstrips (max. 18 frames)
- B. For scanning sheet films (max. 13×18 cm)
- C. For scanning 35mm slides (max. 6 slides) and 120/220 films (6×4.5 cm/ 6×6 cm/ 6×7 cm/ 6×8 cm/ 6×9 cm/ 6×12 cm)

Scanning Negative and Positive Films

1. Remove the reflective document mat. Hold the top of the mat, and gently pull it upward until it is separated from the document cover.



2. Insert the film face down into the proper compartment on the film holder. Adjust the position of the inserted film, so that the desired image appears in the view window.

Caption

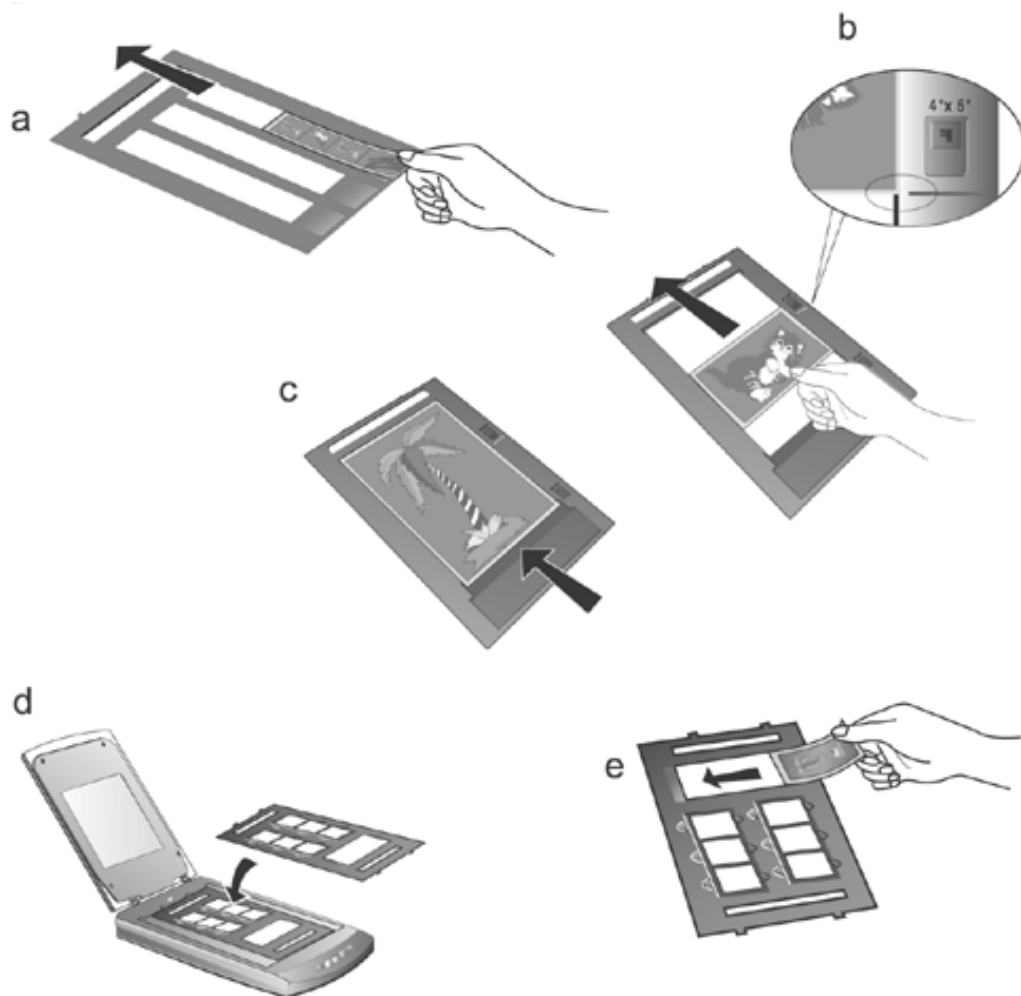
a. Filmstrip

b. Sheet Film:
4" × 5" (10.2 × 12.7 cm)

c. Sheet Film:
5" × 7" (13 × 18 cm)

d. 35mm Slides

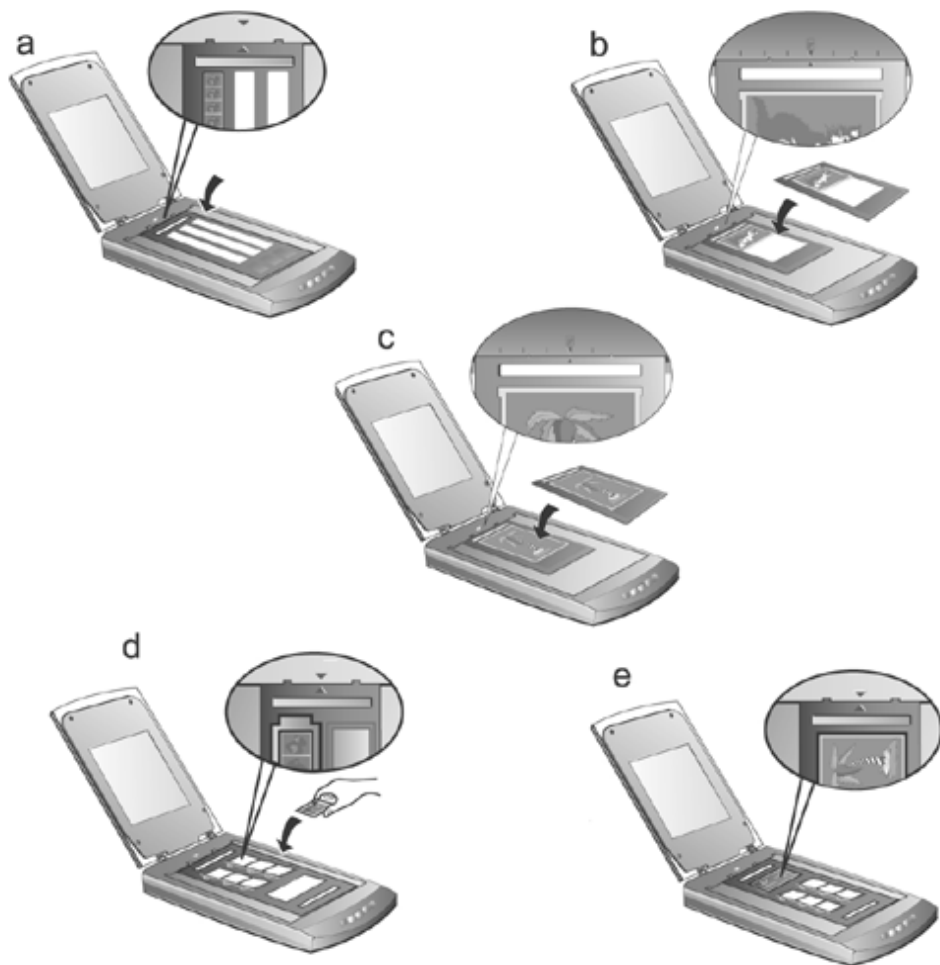
e. 120/220 Film (6 × 4.5 cm/ 6 × 6 cm/ 6 × 7 cm/ 6 × 8 cm/ 6 × 9 cm/ 6 × 12 cm)



Note

- If you are scanning 35mm slides, place the film holder on the scanner first, and then place the slides in the holder.
- When inserting the 4" × 5" (102 × 127 mm) sheet film, move the film forward within the film compartment until the opposite end of the film gets aligned with the arrow sign of the 4" × 5" mark on the right side of the film holder.
- If you have only one 35mm filmstrip to scan, you can choose any of the three compartments on the film holder for filmstrips.

3. Place the film holder on the scanner glass, and align the positioning aids of the film holder to fit into the indentations of the scanner housing. The arrow sign of the particular film compartment must be in alignment with the inverse-arrow sign carved on the scanner housing.



Note

When you use the film holder to scan 35mm slides or 120/220 films, ensure to keep the side with the ready-to-be scanned film toward the inverse-arrow sign on the scanner housing.

4. Double click the Express Manager icon on the Windows system tray to launch Express Manager.
5. Click the **Negative Scan** button if you're scanning negative film. Click the **Positive Scan** button if you're scanning positive film.
6. The default EasyTouch technology will scan the image automatically with optimal settings and send the scanned image to the post processing software.

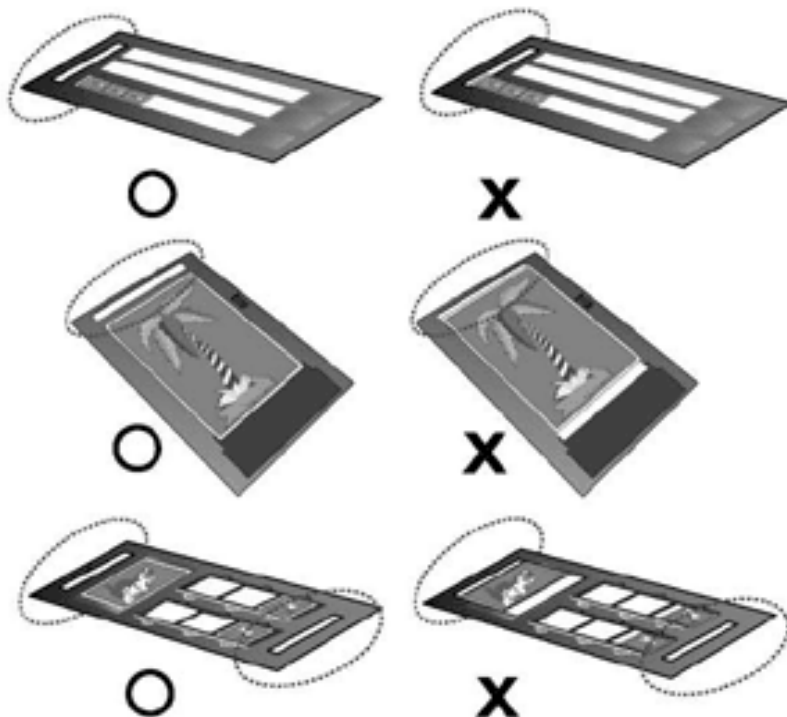


Note

Alternatively, you may choose to use the Advanced Mode to adjust your images with details. Please refer to the [Scanner Buttons](#) section for the procedure of changing default Auto Mode.

Important Notes about Scanning Film

- Do not cover any small compartment below each arrow sign on the film holder because it is necessary for calibration.



- When scanning B&W negative films, to get the optimal scanning result, you are recommended to use the "Advanced Scan Mode" of Uniscan TWAIN program

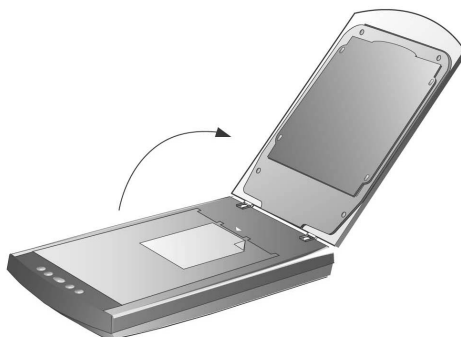
and have **Inverse** turned on. (More related information and tips can be found in the FAQ document in the Setup/Application CD-ROM.)

- Always replace the reflective document mat onto the scanner's document cover after you finish scanning the films.
- Make sure the film is properly loaded into the film holder and the film holder is correctly positioned on the scanner glass.
- Make sure the proper SCAN SOURCE and FILM SIZE are selected before proceeding the scanning task.
- It is recommended to use a higher resolution (such as 1200dpi for 35mm films, 600dpi for 120/220 films, or 300 dpi for large format sheet films) when you proceed the film scanning task to prevent the scan images from losing the quality while you enlarge the size of the images.

Scanning Image(s) from Uniscan TWAIN

The following describes how you may use our bundled image-editing application NewSoft Presto! ImageFolio⁴ to perform the scan. When you get familiar with the scanning, you may alternatively use other TWAIN compatible scanning program or image-editing application to do your scanning projects.

1. Open the scanner's document cover and place the document onto the scanner glass headfirst and facedown.



2. Gently close the document cover.
3. Click on the Windows **Start** button to launch NewSoft Presto! ImageFolio
4. Within NewSoft Presto! ImageFolio, click **File | Acquire | Acquire** to launch

⁴ For more information about using NewSoft Presto! ImageFolio, please consult its on-line help.

Uniscan TWAIN program.



Note

The default mode for Uniscan TWAIN interface is Auto Mode, but you can also click on **Switch to Advanced Mode** to tailor scanning settings with details. Please refer to the Uniscan TWAIN on-line help for further information.

5. The Uniscan TWAIN interface (Auto Mode) shows up.
6. Click on the **Open the Auto Scan Control Panel** button if you want to change the scan source and adjust resolution. Click on **Close** to save the settings and return to the Uniscan TWAIN interface (Auto Scan).
7. Click on the **Auto Scan** button. The EasyTouch Technology will scan the images automatically with optimal settings and send the scanned images to NewSoft Presto! ImageFolio.



Note

When you are scanning images with night scenes or items that have black borders, please place one sheet of white paper as the background.

III How to Maintain Your Scanner

The Scanner Utility Program

The main functions of Scanner Utility are: **scanner connection checking**, **scanning lamp control**, and **scanning position alignment**.

The Scanner Utility program checks to make sure that the scanner software is properly installed, and the connection between the scanner and computer is working. Furthermore, the program allows you to turn the scanning lamp on and off, and define an idle time for the scanning lamp to automatically turn itself off. Although we have designed the scanner lock to hold the scanning lamp in place during shipping, sometimes the refinement of the initial scanning position might be necessary.



Note

The Scanner Utility program does NOT affect the quality of scanned images. It is only used to establish a connection with the scanner. Settings that affect the scanned image (i.e., color, size, readability, clarity, etc.) can be found in the scanner software programs and especially the Uniscan TWAIN interface.


Scanner Connection



You can check the scanner connection from Express Manager icon on Windows system tray.



Note

If the icon is not displayed on the system tray, from Windows Start menu, point to **Programs** | (**your scanner model name**) | **Express Manager** to reactivate the program.

The Express Manager icon , located on the Windows system tray, indicates if the scanner software is properly launched and the scanner and computer are communicating with each other.

Appearance	Status
	The program has been successfully launched and the scanner is connected with the computer, ready to scan images.
	The scanner is not connected with the computer. Or, the scanner power is not switched on.
No Display	You have chosen to terminate the program; no matter the scanner is connected or disconnected with the computer.

Lamp Control

The scanner lamp may be turned ON and OFF manually via the Scanner Utility or the Power Save button. Read the following paragraphs describing how to control the scanner lamp via the Scanner Utility or the Power Save button.

Via the Scanner Utility

You may set the default time for the lamp to automatically turn off after a scan by:

1. Right click the Express Manager Icon on the Windows system tray and select **Scanner Utility** from the pop-up menu.
2. Find the two buttons with light bulb icons on them, once the Scanner Utility window is open.
3. Click **Always Keep Lamp On** if you want the lamp to always be illuminated.

Or, click side up and down arrows to set a default time for the lamp to automatically turn off after a scan.

Via the Power Save button

The Power Save button enables users to turn off/on the scanner lamp immediately to conserve energy with simply one click the **Power Save** button on the Express Manager interface.

How to turn OFF the scanner lamp

- Click the **Power Save** button on the Express Manager interface to turn off the lamp.

How to turn ON the scanner lamp

- Press any function button on the scanner.

Aligning the Scanner

In most cases, the scanner doesn't need to be aligned but there are instances when the alignment might be required. You need to align the scanner only if parts of the scanned document are missing from any of its edges. For example, the heading of a document might be missing from the top edge after the document has been scanned.

To align the scanner, follow the steps below:

1. Place a photograph on the top right side of the scanner glass (near the back of the scanner). Please note that only part of the photograph will be scanned.
2. Right click the Express Manager icon on the Windows system tray and select **Scanner Utility**.
3. Once the Scanner Utility window is open, click the **Start Alignment** button. Part of the photograph will be displayed in the ALIGNEMENT window.
4. Click on the arrow buttons until the top left corner of the scanned photograph aligns with the top left corner of the preview window.
5. Click on **OK** when the alignment has been completed.

Removing the Document Cover

The document cover has been designed for easy removal so that larger items, such as bound books, can be placed on the scanner glass. To remove the cover, open it all the way. Place your other hand firmly at the back of the scanner and lift the document cover, separating it from the back of the scanner. To replace the cover, simply slide it back into place.

Maintenance

To keep your scanner working smoothly, take a moment to review the following maintenance tips.

- Avoid using the scanner in a dusty environment. When it is not in use, keep the scanner covered. Dust particles and other foreign objects may damage the unit.
- Do not subject the scanner to excessive vibration. It may damage the internal components.
- Clean the scanner glass by lightly spraying a non-abrasive glass cleaner onto a soft lint-free cloth. Then, wipe the glass thoroughly with the cloth. DO NOT SPRAY CLEANER DIRECTLY ONTO THE SCANNER GLASS. Excess liquid residue may fog or damage the scanner.
- Your scanner operates best in temperatures between 10° C to 40° C (50° F to 104° F).

Appendix: Specifications⁵

Uniscan e85	
Physical Dimensions	265 × 435 × 78 mm (W×D×H)
Weight	2.7 Kgs
Operating Temp.	10° C to 40° C (50° F to 104° F)
Max. Scan Area	Reflective: 216 mm × 297 mm (8.5 × 11.69 in.) Transparency: Positive or negative films of 35 mm filmstrip, 6 pcs 35 mm slides, 120/220 film (max. 6 × 12 cm) or sheet film (max. 13 × 18 cm)
Color Modes	Color: Input 48-bit; Output 24/48-bit Grayscale: Input 16-bit; Output 8/16-bit Black & White: 1-bit
Resolution	Optical Resolution: 3200 dpi Max. Hardware Resolution: 6400 dpi (main scan) × 3200 dpi (sub scan) Max. Interpolated Resolution: 24000 dpi
Scanning Materials	Reflective color or black-and-white originals, 35 mm slides, 35mm filmstrip, 120/220 film (max. 6 × 12 cm), sheet films (max. 13 × 18 cm)
Protocols	TWAIN Compliant
Connection	USB 2.0 High Speed
Lamp Type	Cold Cathode Lamp
Power Adapter	Power Output DC 15V, 1.0A
Power Consumption	Operation: 15 watts maximum Idle: 5 watts
Electrical Safety Regulation	CCC, GB4943-2001, GB9254-1998, GB17625.1-2003

⁵ Hardware specifications may change at any time without prior notice.